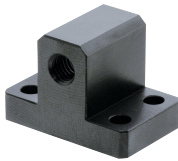


# BJ215

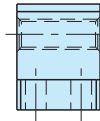
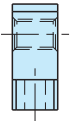
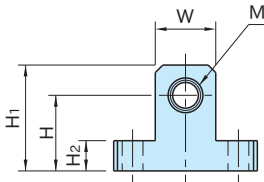
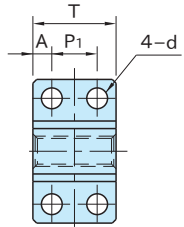
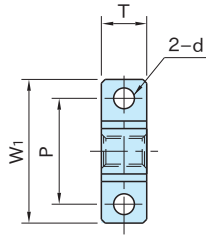
# 可调式限位器



**BJ215** -S  
(单型)



**BJ215** -W  
(双型)



**BJ215** -S  
(单型)

**BJ215** -W  
(双型)

本体
S50C
四氧化三铁膜

型 号	M	H	H <sub>1</sub>	W <sub>1</sub>	T	d	P	P <sub>1</sub>	A	H <sub>2</sub>	W	质量 (g)
<b>BJ215-08020S</b>	M 8×1.25	20	28	38	12	5.5	28	—	—	8	16	50
22					12			5	95			
<b>BJ215-10025S</b>	M10×1.5	25	35	50	16	6.5	36	—	—	10	20	110
32					18			7	220			
<b>BJ215-12032S</b>	M12×1.75	32	44	60	19	9	42	—	—	12	24	190
38					20			9	380			
<b>BJ215-16040S</b>	M16×2	40	56	75	25	11	54	—	—	16	32	420
50					28			11	840			

## 使用示例及使用方法

